



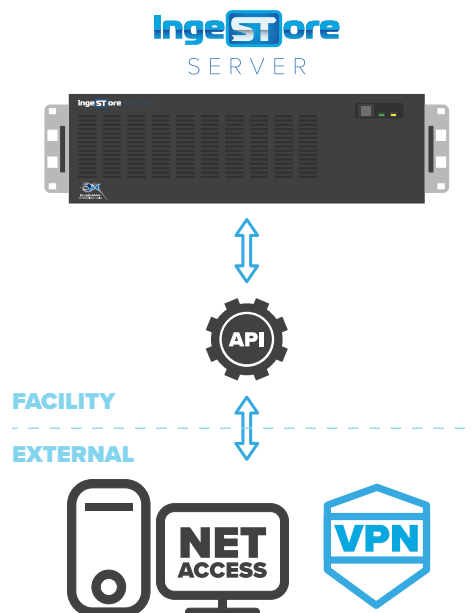
CONTROL MULTIPLE INGESTORE INSTANCES VIA A WEB BROWSER ON A PUBLIC OR PRIVATE NETWORK FOR REMOTE PRODUCTION WORKFLOWS

NETACCESS WEB CLIENT

IngeStore NetAccess provides network control of one or more IngeStore systems. Each and every feature available within the desktop IngeStore software is made available through the HTML client and accessed through standard web browsers.

NetAccess download includes the HTML Client, a guided installer and a free and lightweight web server to help simplify the setup process. NetAccess can also be integrated into more complex IT infrastructure with existing web servers, or even customised to suit specific needs of any customer with the source code being available free of charge.

NetAccess can be downloaded from the Bluefish website at bluefish444.com/netaccess



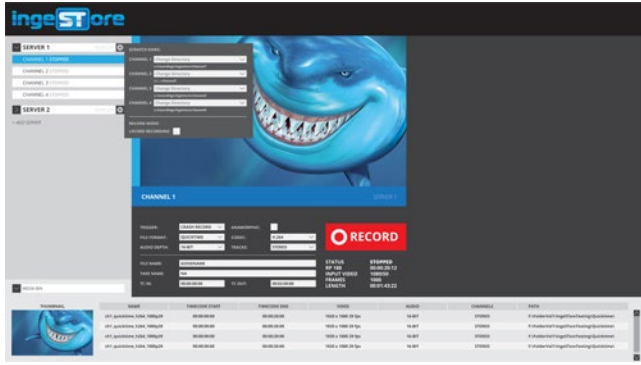
REST API

IngeStore supports a Rest API for external applications to control and interact with the IngeStore capture process. The JSON REST API is a simple, easy-to-use interface allowing for external and network control integrations with all the features of the IngeStore solution made available.

The API allows Bluefish's own NetAccess to communicate with the IngeStore software, enabling a web browser-based controller for every feature of one or more IngeStore solutions.

Existing 3rd-party software and developers of workflow solutions such as schedulers, master control, and media asset management tools can now integrate with the IngeStore capture solution for a fast to market development based on accessible web technologies.

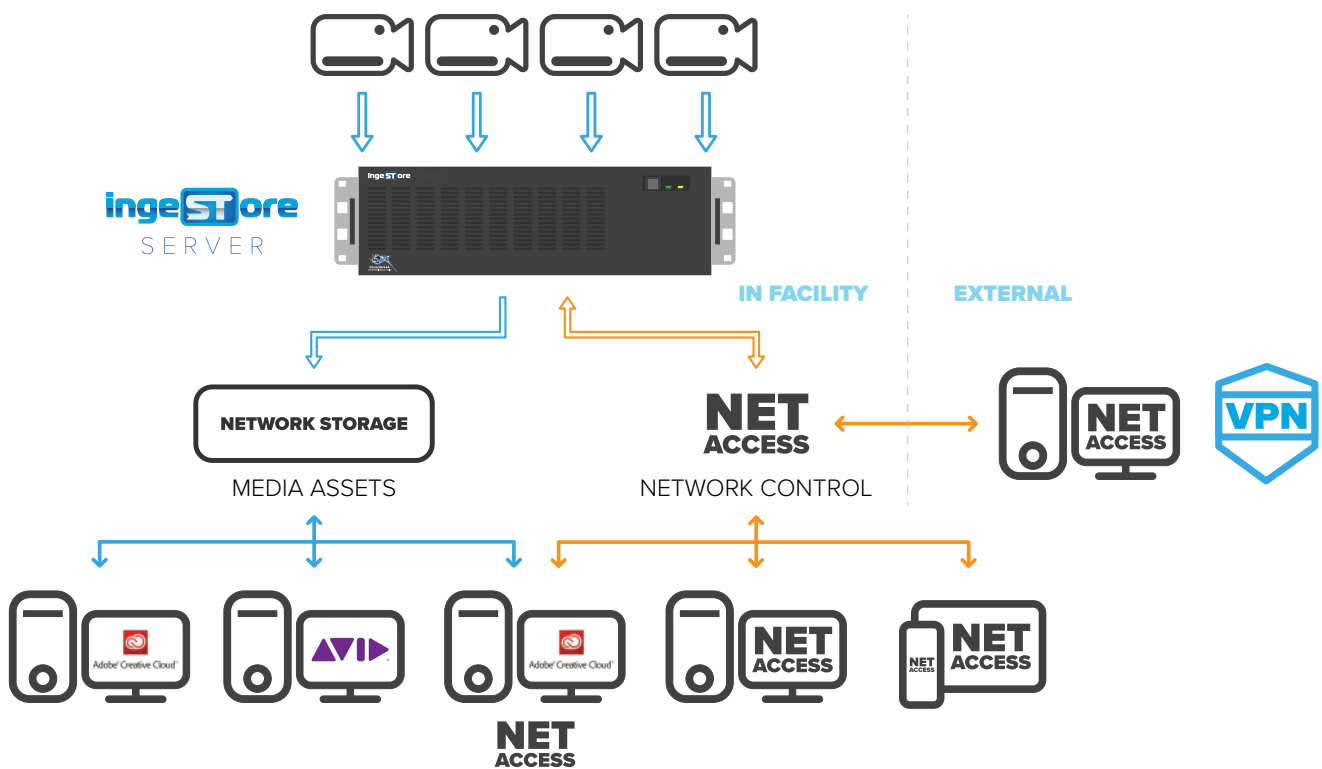
A REST API licence is required for each IngeStore installation requiring API or NetAccess integration, and is available to purchase at shop.bluefish444.com/rest-api



FEATURES OF NETACCESS

- Compatible with all major web browsers on workstations, servers and mobile devices
- All features of the IngeStore desktop application are available within NetAccess for remote control
- Full confidence when monitoring capture, no matter what bandwidth is being used
- Can be used to either control a single IngeStore workstation or multiple connected IngeStore Servers

NETACCESS REMOTE PRODUCTION WORKFLOW



TECHTEL RESTFUL API CASE STUDY



TECHTEL INTEGRATES BLUEFISH444 INGESTORE SERVER WITH INFLO™ FOR NETWORK CONTROL OF TASMANIAN PARLIAMENT'S CENTRALISED SDI INGEST

"We knew that we wanted to focus on quality when we were engineering an ingest solution for our customer and Bluefish444 had everything we needed," comments Mal Chandler, CEO at Techtel. "The RESTful API interface is a game changer for us because it takes us away from needing to install software on premise which is absolutely vital to our goals of producing cloud native software."

In order to allow Tasmanian Parliament to control the IngeStore Server from anywhere on their network, Techtel built upon Bluefish's REST API to design a unique user interface with the ability to choose codecs and capture modes directly from a web browser.

Bluefish444 | Telephone: +61 3 9682 9477 | Fax: +61 3 9328 2031 | info@bluefish444.com
 For worldwide reseller and distributor contact information, please go to bluefish444.com/contacts